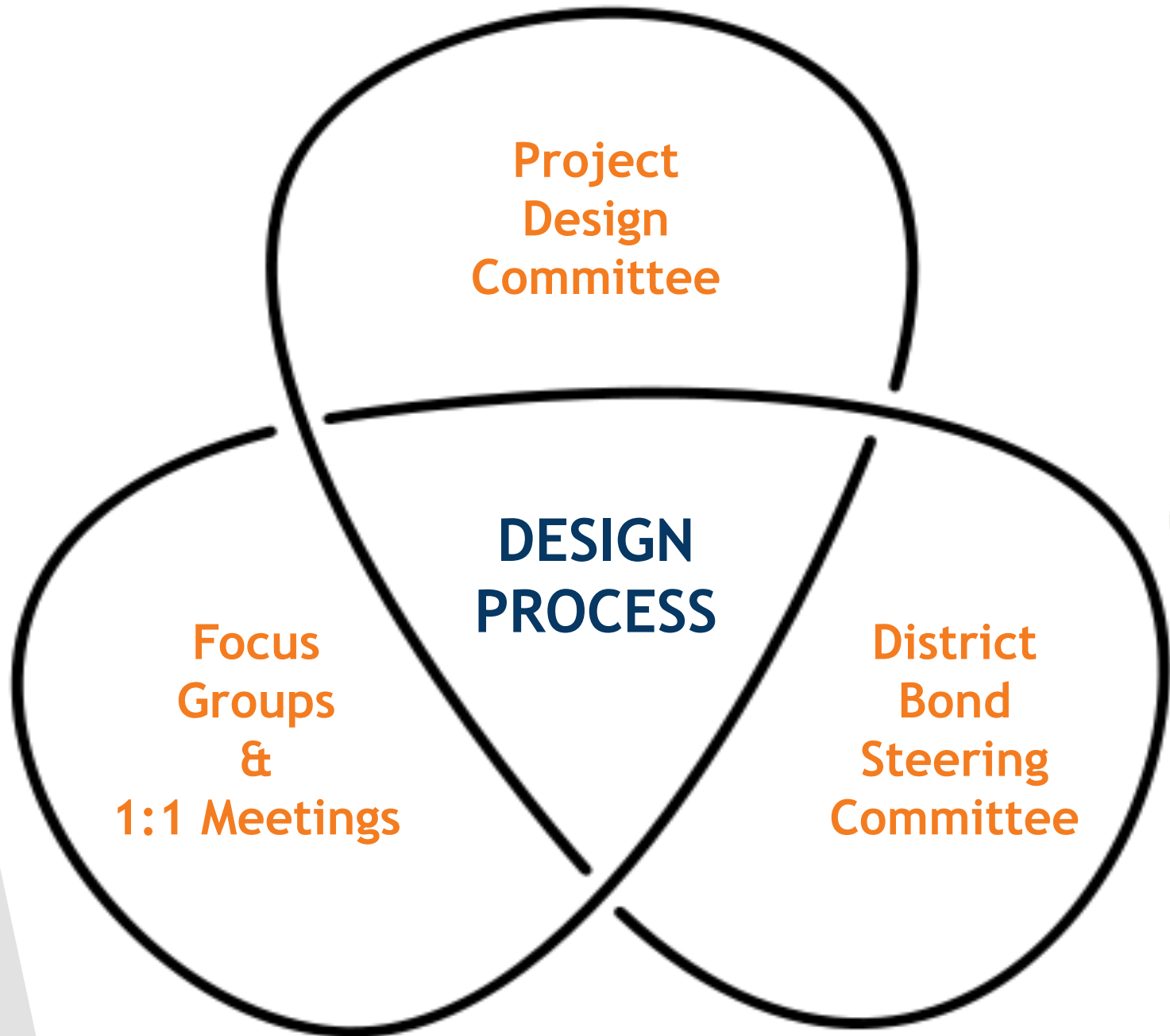


SALINE BOND UPDATES

- PROCESS
- HIGH SCHOOL ADDITIONS
- LIBERTY/MIDDLE SCHOOL ATHLETICS
- HORNET OPERATIONS CENTER
- PLAYGROUNDS
- HARVEST ROOF / PARKING LOT
- HIGH SCHOOL HVAC





Kingscott



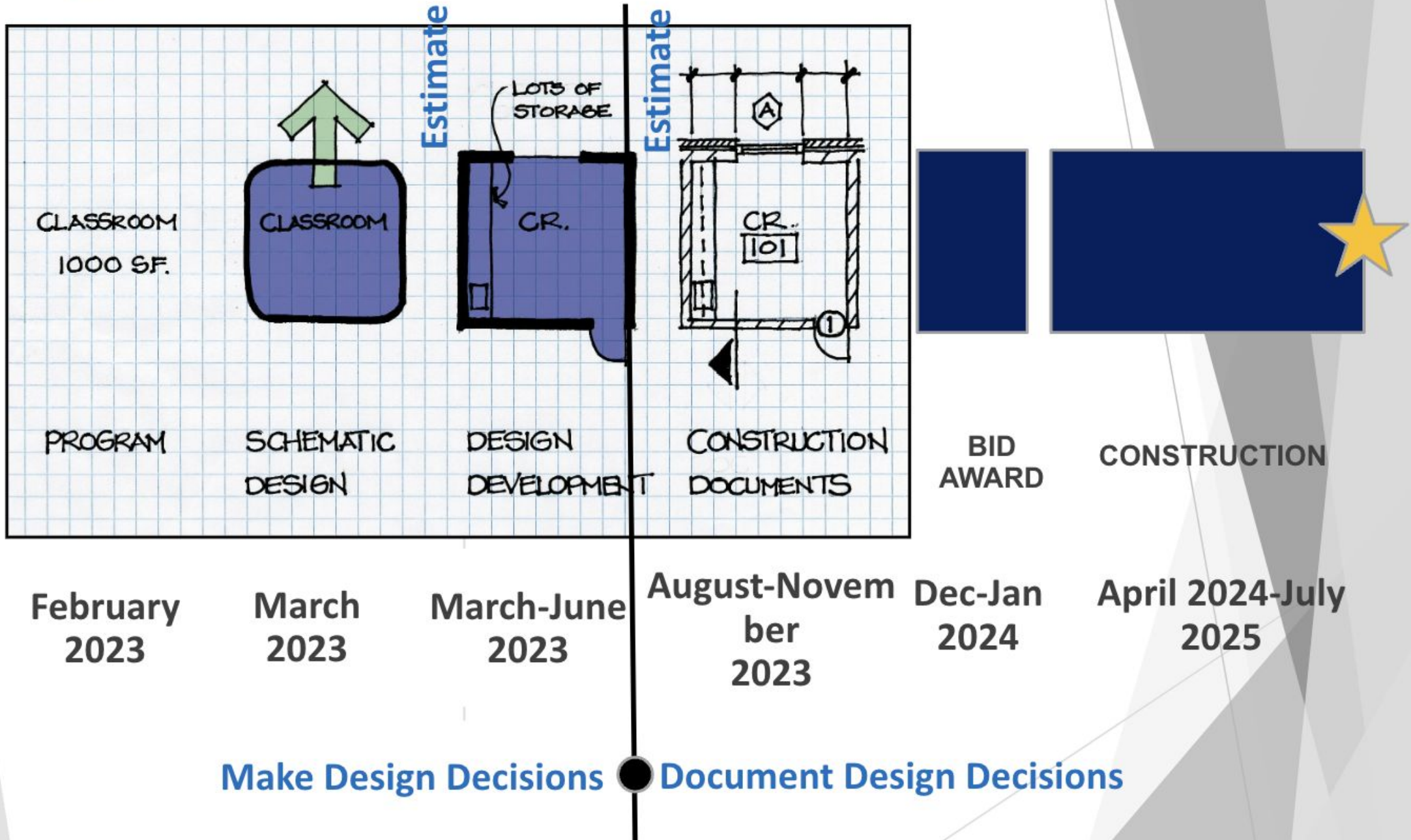


Expectations Creed:

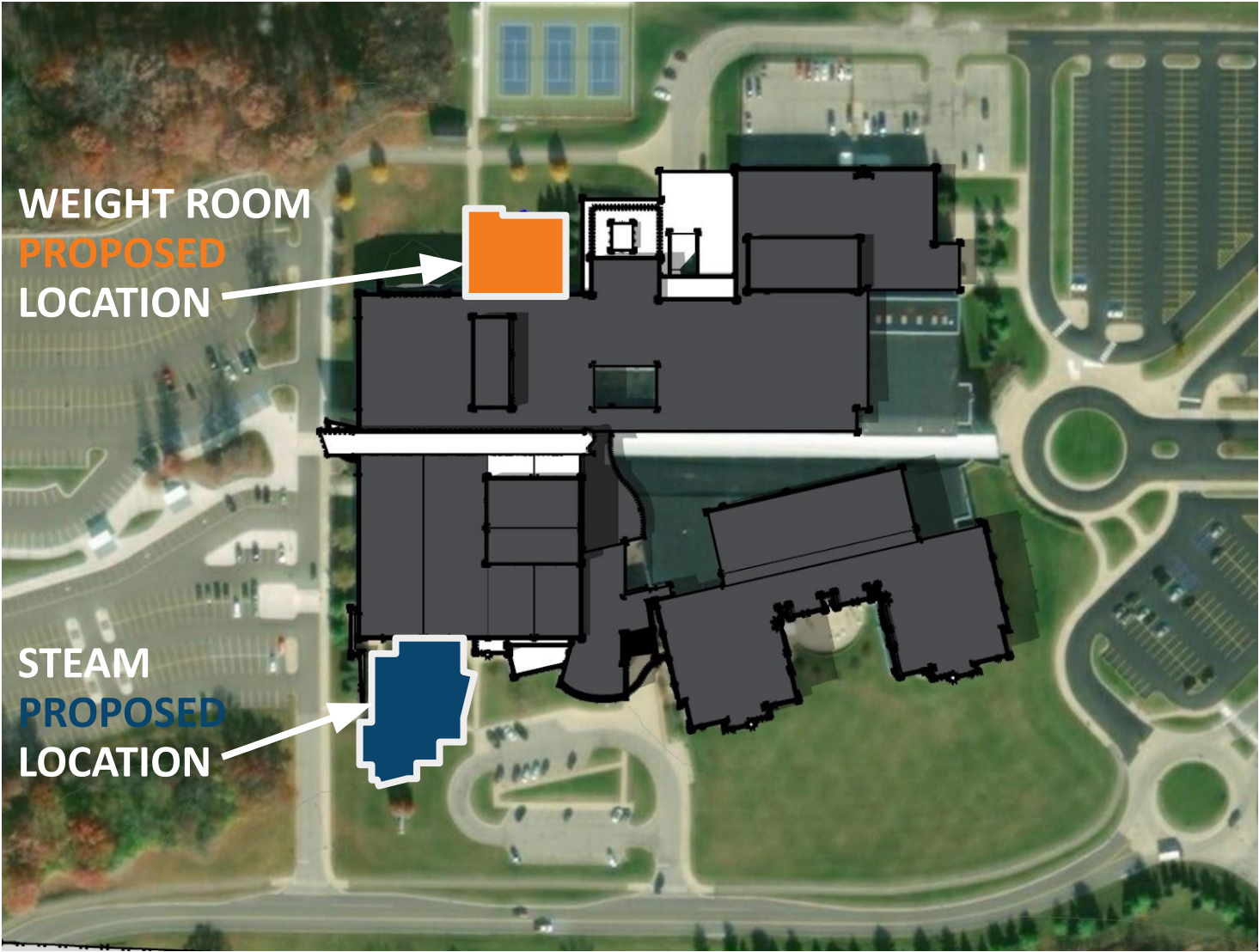
- **The Design Process for a school is not a straight line.** I will expect ups and downs, give and take, requests and concessions, moving ahead and circling back, and compromise. With that understanding, the process can be fun and rewarding.
- **Just because I requested something doesn't mean it will be included in the project.** To be included, my request has to meet the requirements of the project goals, the budget, the schedule, and the overall concept. It should be explained, however, why my idea was not incorporated.
- **The Architect may show me solutions which could be beyond the budget** in order to understand design priorities and to find the best solution. The Architect should be clear whether a solution is affordable or not.
- It is unlikely that I can afford the **Best Solution Possible**, but the Design Process will allow me to select the **Best Solution I Can Afford.**



Sample Timeline



HIGH SCHOOL AERIAL VIEW

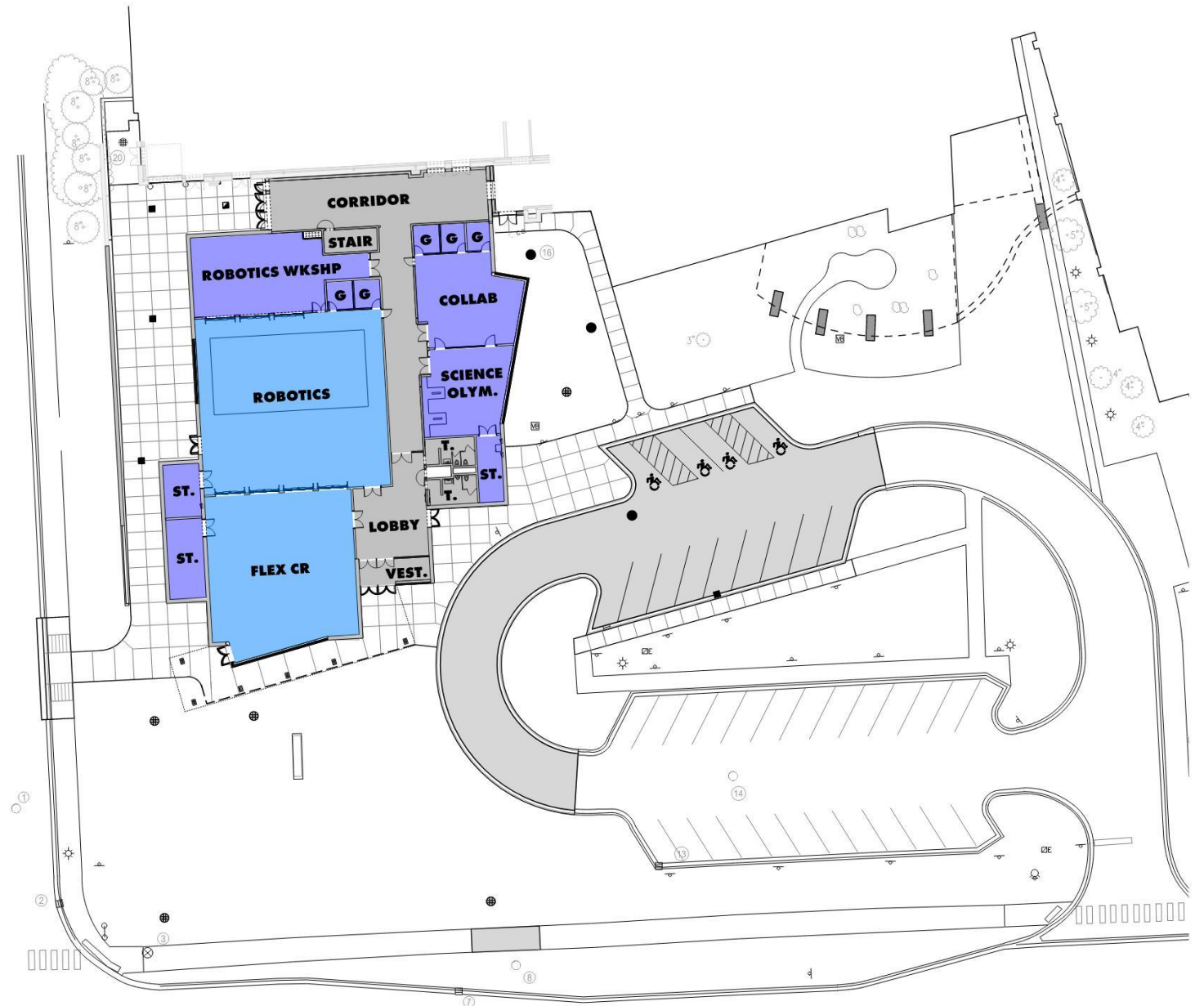


SITE/FLOOR PLAN- STEAM ADDITION



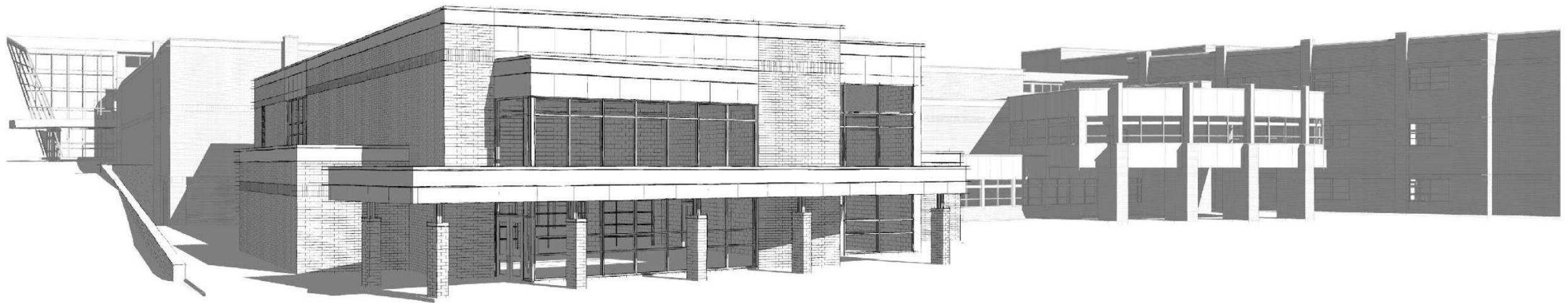
SAS K-12 Steam Vision (draft):

Saline Science, Technology, Engineering, Arts, and Mathematics programming will support students in developing a design-thinking mindset anchored in empathy, research, creating and solving real-world problems that will equip them to thrive in a global society and benefit the broader community. From in-school opportunities to extension experiences to club participation, all SAS students will have access to STEAM.

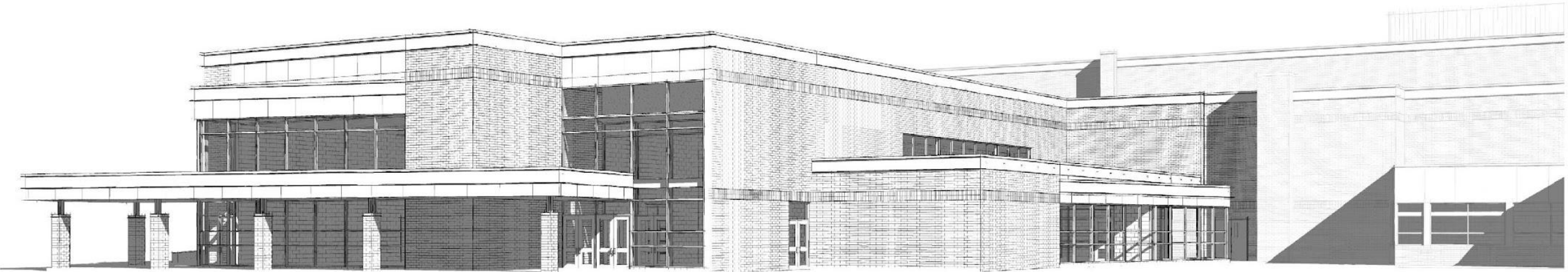




HIGH SCHOOL – STEAM ADDITION

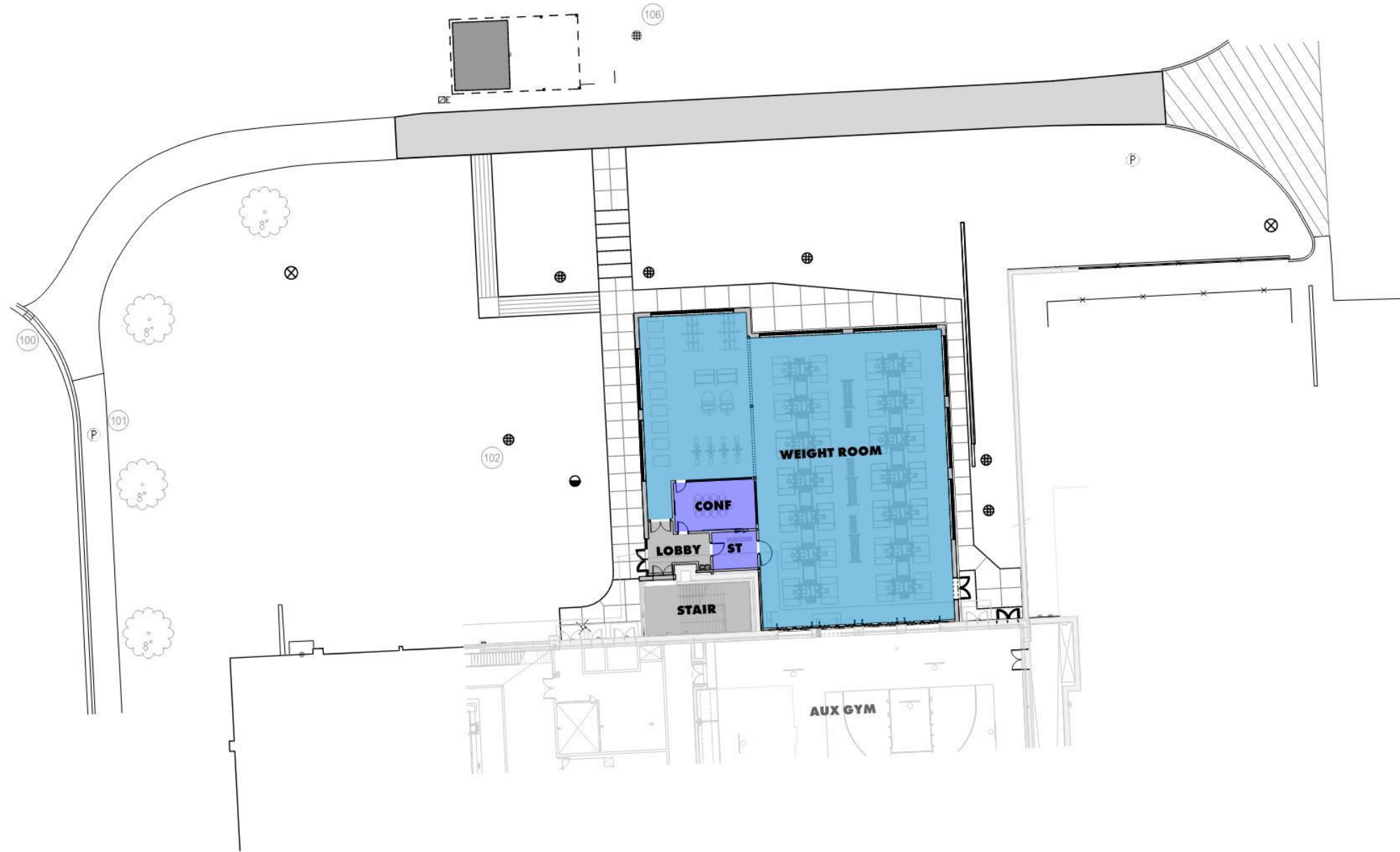


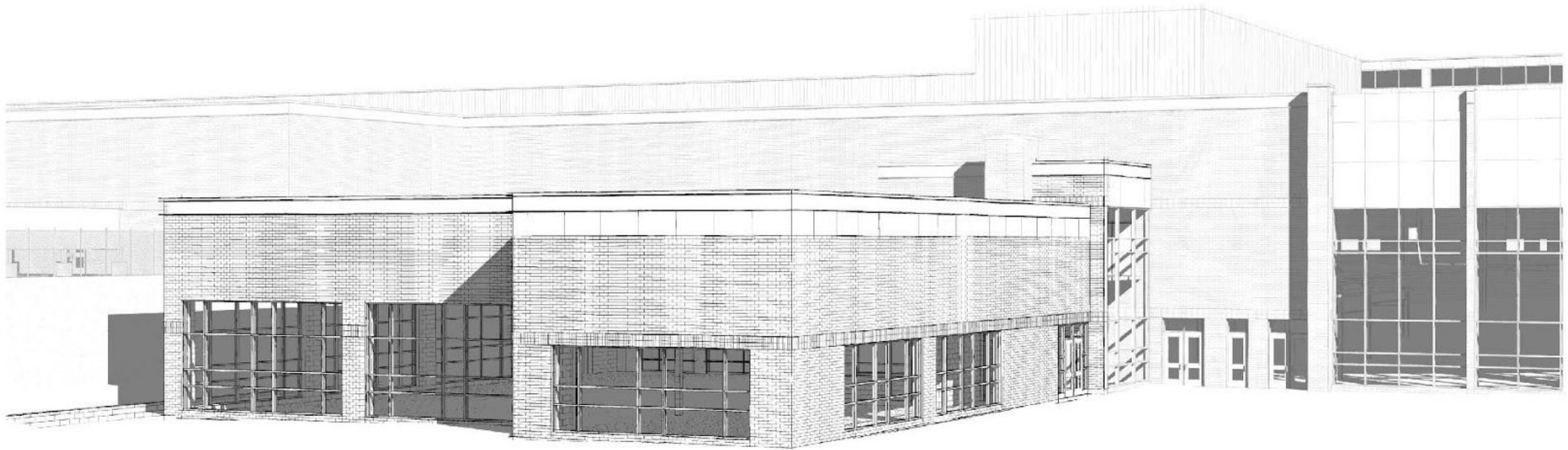
HIGH SCHOOL – STEAM ADDITION



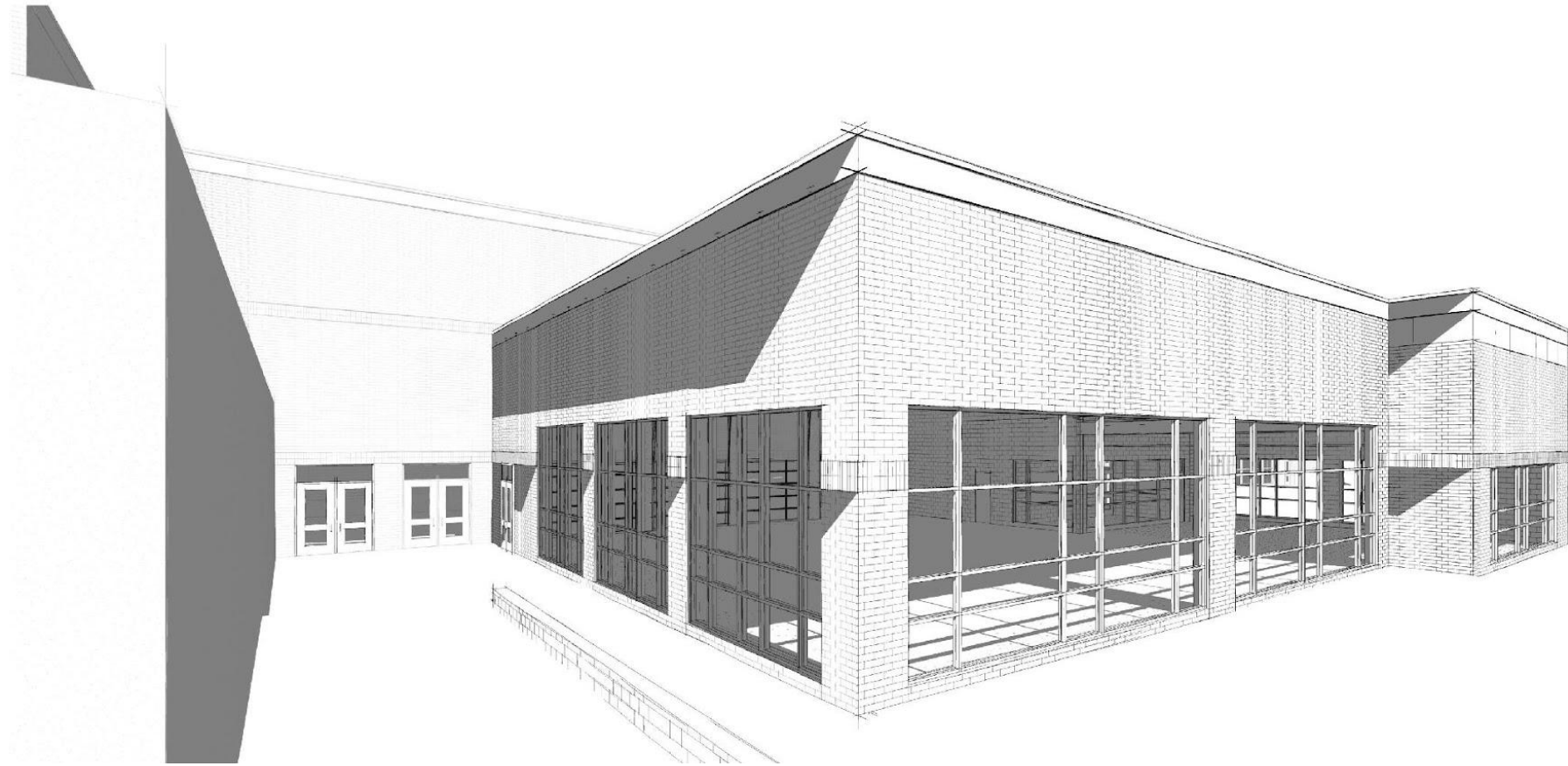
HIGH SCHOOL – STEAM ADDITION

SITE/FLOOR PLAN-WEIGHT ROOM ADDITION



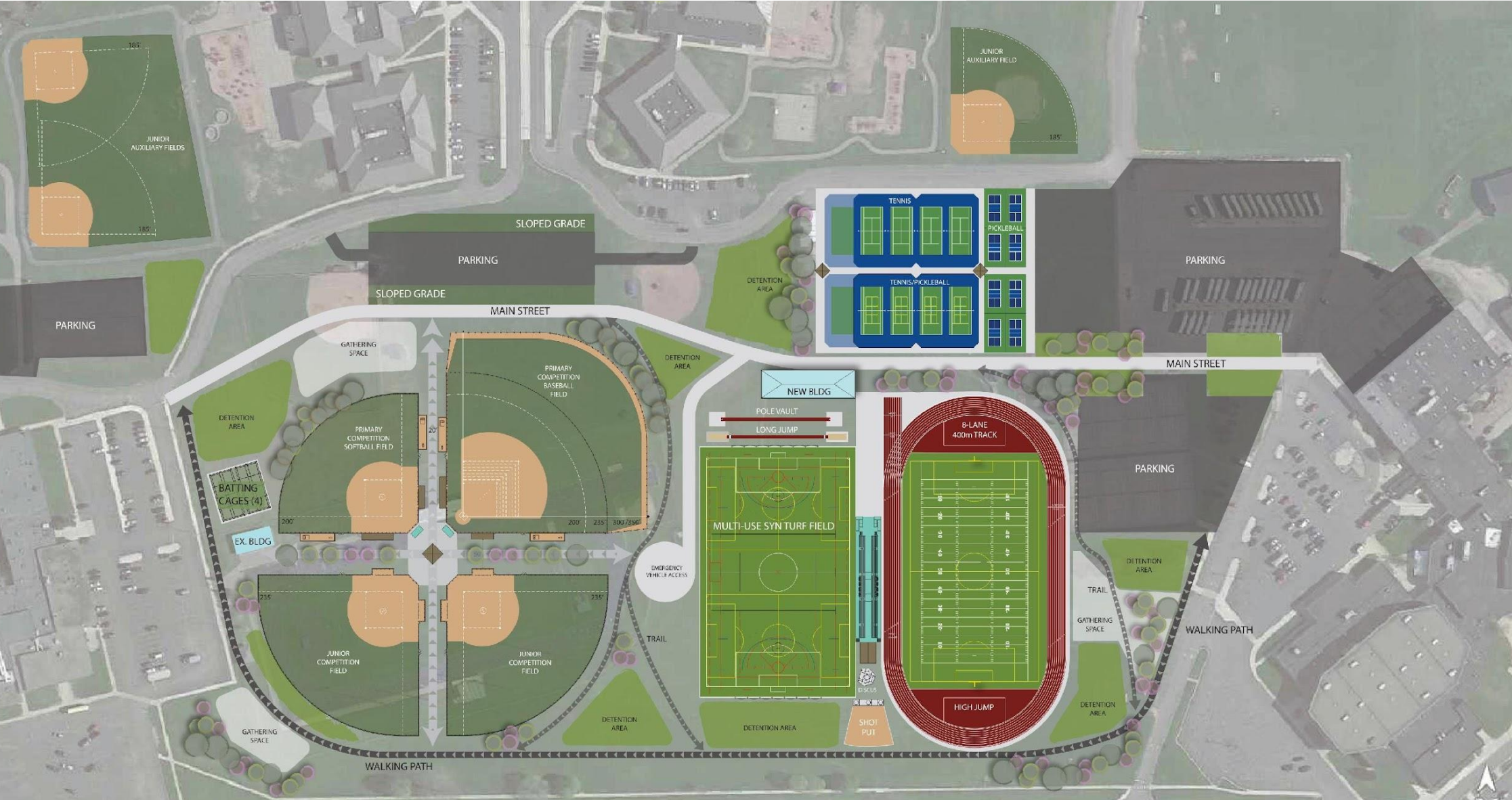


HIGH SCHOOL – WEIGHT ROOM ADDITION



HIGH SCHOOL – WEIGHT ROOM ADDITION

LIBERTY / MIDDLE SCHOOL ATHLETICS





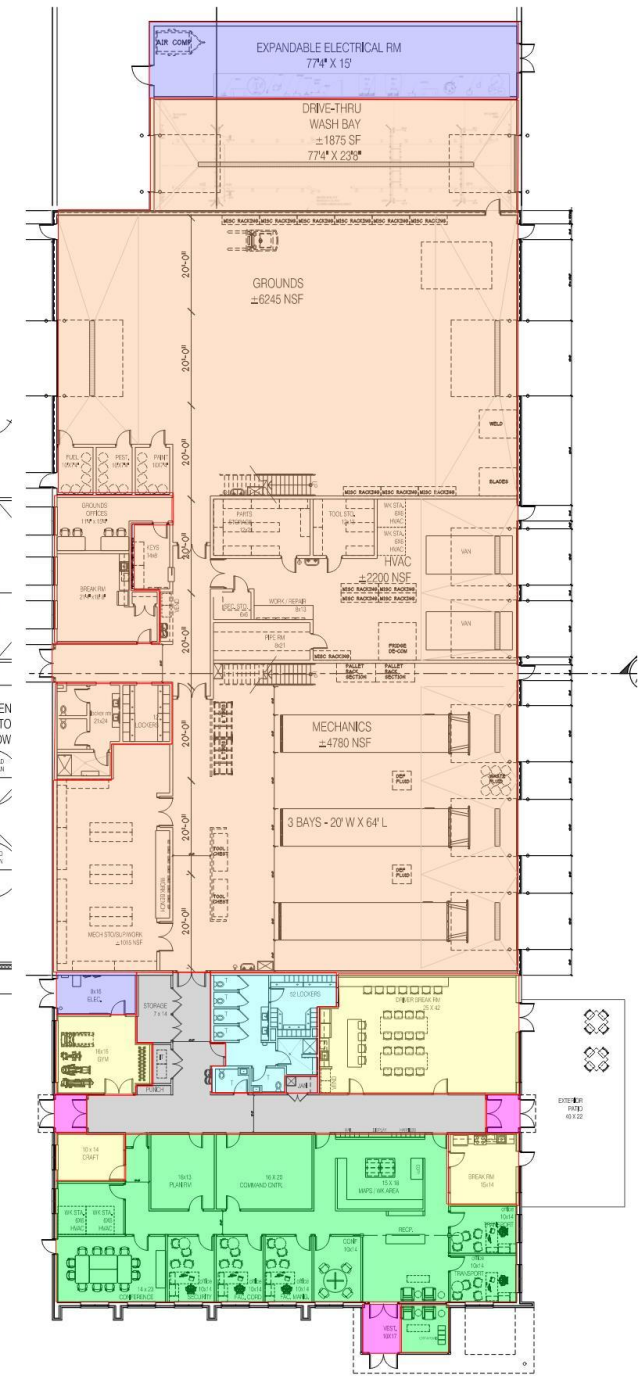
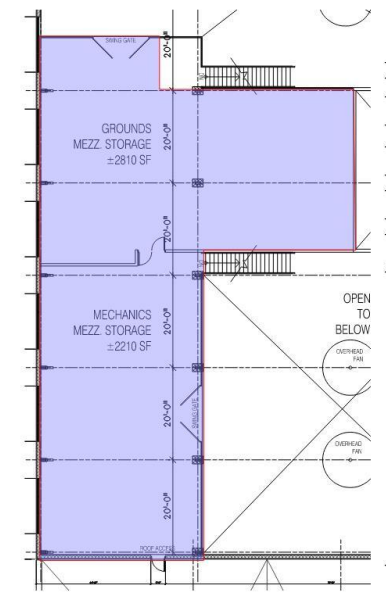
HORNET OPERATIONS CENTER

AERIAL VIEW 2

2023.05.03

- URETHANE SEALANT ON CONCRETE
- SEALED CONCRETE
- CERAMIC
- LVT
- CARPET
- POLISHED CONCRETE
- WALK-OFF MAT

DRAFT FOR COMMENT
6-2-23



HORNET OPERATIONS CENTER

PLAYGROUNDS – SITE PLAN



WOODLAND MEADOWS

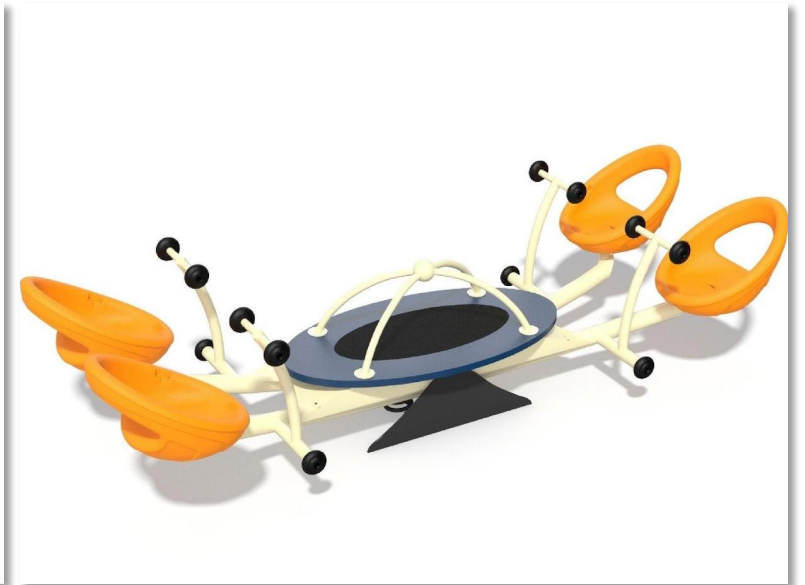
PLAYGROUNDS – EQUIPMENT



OmniSpin



Oodle Swing



We-saw

**HARVEST ROOF &
PARKING LOT**

HIGH SCHOOL HVAC



**CREATING
PLACES
YOU'LL LOVE**